

DISCOVER

CLAREMONT

From economy to boutique, Claremont's 400 hotel rooms provide guests with inviting rooms and peaceful nights. The properties include locally owned motor inns near Interstate 10, a full-service hotel and conference center on Historic Route 66 for business travelers and guests, and an upscale boutique property in downtown Claremont that caters to couples and business travelers alike.



HOTEL CASA 425

425 W. First Street

A stylish boutique hotel and lounge opening onto a tranquil courtyard in the heart of historic Claremont Village. Located within steps of fine restaurants, cafes, boutiques, art galleries and the Claremont Colleges, Casa 425 is the only sophisticated boutique hotel in Southern California's Inland Empire. The hotel merges California mission architecture with contemporary styling and features 28 sophisticated guest rooms, an onsite lounge and full bar, a beautiful outdoor living room featuring water fountains and fire pits, meeting and event space and more.

Total Rooms - 28
 Double Rooms - 4
 Suites / Junior Suites - No
 Rates Range - \$235-\$495
 Breakfast - Yes
 Bus / RV Parking - No
 In-Room Coffee/Tea - Yes
 Preferred Group Size - 3-20
 Sales Contact Info -
 909-624-2272
 megan@foursisters.com

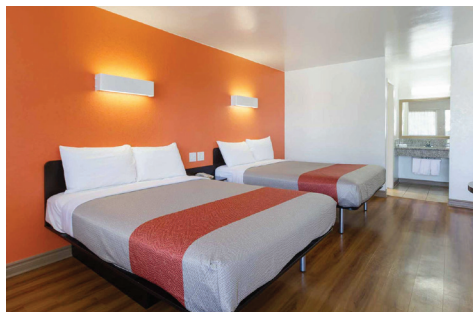


DOUBLETREE BY HILTON HOTEL CLAREMONT

555 W. Foothill Blvd.

The hotel's elegant, contemporary guest rooms and suites offer comfort and convenience with luxurious Sweet Dreams® beds, in-room safes, refrigerators, and high-speed Internet access. Relax with friends, alumni or business associates in its lush courtyard, enjoy a cocktail or meal by the waterfall, and dine in casual elegance at **The Orchard Restaurant**, serving a wide selection of California Mediterranean Fusion influenced dishes. After hours, **Piano Piano's** high-energy, all-request show will keep guests singing and laughing into the night! And don't forget about those famous DoubleTree cookies.

Total Rooms - 195
 Double Rooms - 90
 Suites / Junior Suites - 9
 Rates Range - \$179-\$409
 Breakfast - Available
 Bus / RV Parking - Yes
 In-Room Coffee/Tea - Yes
 Preferred Group Size - 10-300
 Sales Contact Info -
 Shirlene Nowling
 909-445-1924
 Shirlene.nowling@hilton.com



MOTEL 6 CLAREMONT

840 S. Indian Hill Blvd.

Motel 6 Claremont features one of Southern California's finest tennis facilities available year-round with eight lighted championship courts. Guest amenities include free Wi-Fi, free local shuttle, and free use of its tennis courts. Park-like grounds available to rent for special events.

Total Rooms - 121
 Double Rooms - 92
 Suites / Junior Suites - No
 Rates Range - \$69-\$199
 Breakfast - No
 Bus / RV Parking - Yes
 In-Room Coffee/Tea - No
 Preferred Group Size - Any
 Sales Contact Info -
 Steven Mercado
 909-621-4831 x-103
 m68600bo@6franchise.com



CLAREMONT LODGE

736 S. Indian Hill Blvd.

Enjoy unbeatable accommodations near the cultural and recreational center of Southern California with comfortable stylish rooms, including available jacuzzi suites. Amenities include an outdoor swimming pool and free Wi-Fi.

Total Rooms - 56
 Double Rooms - 11
 Suites / Junior Suites - Yes
 Rates Range - \$90-\$150
 Breakfast - No
 Bus / RV Parking - Yes
 In-Room Coffee/Tea - Yes
 Preferred Group Size - 10
 Sales Contact Info -
 909-626-5654