

DISCOVER

# CLAREMONT



STAY



DINE



EXPLORE

5 hotel choices to fit most any budget and need, 10 miles from Ontario International Airport

A "food neighborhood" of over 70 locally owned restaurants and bakeries, plus regional craft beers & spirits

17 museums, galleries and gardens, 8 theaters, unique boutiques, and the nearby San Gabriel Mountains

**Come relax a little smarter**  
*in "one of the top college towns in the west\*"*

\*Sunset Magazine

Find hotel specials and visitor information at [DiscoverClaremont.com](http://DiscoverClaremont.com)

CLAREMONT  
L O D G E



hotel + lounge  
*casa* 425



DISCOVER

# CLAREMONT

Get a little smarter  
about Claremont

Just 30 miles east of Los Angeles, Claremont is one of America's top college towns, home to seven private colleges, including three of *Forbes'* 10 top-ranked liberal arts schools. With a walkable downtown village of locally owned boutiques and restaurants, inviting guest rooms, a burgeoning craft beer and spirits scene, public art, and vivid examples of early and modernist California architecture throughout the city and campuses, Claremont is a hidden destination in "busy L.A."



## Fast Facts

**Founded:** April 1887 by Santa Fe Railroad • **Population:** 36,015 • **Size:** 13.49 square miles  
**Natural Amenities:** 2,534 acres of public parkland • 24,100 city trees – 35-time Tree City USA honoree • **Hotel Rooms:** 461 • **Museums & Galleries:** 15 • **Theaters:** 8 • **Public Gardens:** 2 • **National Register of Historic Places Sites:** 8 • **Nearest Airport:** Ontario International Airport (9 miles) • **Nearest Train:** Metrolink (Claremont Depot) • **Amtrak Thruway Service to Pacific Surfliner (Claremont Depot)** • **Filmed in Claremont:** "Bird Box," "Gilmore Girls," "The Absent-Minded Professor," "Son of Flubber," "Teen Wolf Too," "Ben Harper: Pleasure and Pain," "Beaches," "Real Genius," "ChiPs," "Bliss," "Insecure"



## Inviting guest rooms

From economy to boutique, Claremont's 461 hotel rooms serve thousands of annual guests. Travelers will find hotel choices that can fit most any budget and need— including the luxury boutique **Hotel Casa 425** in historic Claremont Village, and the lush garden, resort-type setting at **DoubleTree by Hilton Hotel Claremont**. Economy choices near I-10 include **Motel 6 Claremont**, **Claremont Lodge** and **University Inn Claremont**.

## Dozens of dining choices

With more than 70 locally owned restaurants, grills, and specialty food shops, Claremont has earned acclaim as a "food neighborhood" that's "worth the drive." Local restaurateurs offer fresh takes on a variety of cuisines. Retailers such as **Cheese Cave**, **Some Crust Bakery**, **Bert & Rocky's Ice Cream**, and **I Like Pie** make between-meal snacking a must. And any craft beer tour of Route 66 must include **Claremont Craft Ales**, which produces over 3,000 barrels annually, including its signature Jacaranda Rye IPA. Wine lovers can enjoy weekend tastings and fare at Wine Spectator-winner **Packing House Wines**, while **Hotel + Lounge Casa 425** and **The Orchard Restaurant at DoubleTree** are dine-and-stay options. And with many four and five-star (Yelp) choices located within the walkable Claremont Village, visitors can enjoy the city's free parking and literally stroll to wherever their appetites lead them.





## A bike-friendly, outdoor destination

Metrolink takes visitors directly from Union Station to Claremont's historic depot, making it a green getaway from L.A. Couples and families will find amenities and full range of grades—from peaceful tours along tree-lined streets to the challenging trails and roads in the nearby San Gabriel Mountains, where avid cyclists can tackle the AMGEN Tour of California's challenging route to Mt. Baldy. Trail running and biking in the **Claremont Hills Wilderness Park** rewards visitors with views stretching to Downtown L.A.



## An evening escape for adults

The refurbished **Claremont Packing House**—an early home to the citrus co-op that became Sunkist—features a wine bar, BBQ joint, coffee and ice cream, and other restaurants and shops. Inviting nighttime entertainment includes dueling pianos at **Piano Piano** (at the DoubleTree), dinner theater at the **Candlelight Pavilion**, local bands at various pubs, and popular and arthouse movies at **Laemmle's Claremont 5**.

## Unique boutiques

Claremont's locally owned boutiques feature hand-selected fashions, locally made "upcycled" furnishings, handicrafts and accessories, antique collections, and much more. As the first Fair Trade Town in Southern California, many Claremont retailers carry merchandise that is green and fair, including **Buddhamouse Emporium** and **Rio de Ojas**. For music lovers in search of rare out-of-print vinyl and record players, world-class record store **Rhino Records** is a must-stop.

## Culture (and horticulture)

Claremont has long been an artist's haven, and is home to Grammy-winner **Ben Harper's Folk Music Center and Museum**, and world's largest collection of native California flora at **California Botanic Garden**. Discover the new **Benton Museum of Art** at Pomona College, the **Raymond M. Alf Museum of Paleontology**, and the **Claremont Museum of Art** (at Claremont Depot). Visitors will also find galleries, world-class public art and classic California architecture at the colleges and around town. The **James Turrell Skyspace**, "Dividing the Light," at Pomona College and the **Margaret Fowler Memorial Garden** (featuring Alfredo Ramos Martinez' mural "The Flower Vendors") at Scripps College are two must-visit campus stops.



**Media contact for visitor information and travel journalist accommodations:**

Ron Antonette | [news@discoverclaremont.com](mailto:news@discoverclaremont.com)

[@visitclaremont](https://www.instagram.com/visitclaremont)

[@discoverclaremont](https://www.instagram.com/discoverclaremont)



# DISCOVER CLAREMONT

From economy to boutique, Claremont's 461 hotel rooms provide guests with inviting rooms and peaceful nights. The five properties include three locally owned motor inns near Interstate 10, a full-service hotel and conference center on Historic Route 66 for business travelers and guests, and an upscale boutique property in downtown Claremont that caters to couples and business travelers alike.



## HOTEL CASA 425

**425 W. First Street**

A stylish boutique hotel and lounge opening onto a tranquil courtyard in the heart of historic Claremont Village. Located within steps of fine restaurants, cafes, boutiques, art galleries and the Claremont Colleges, Casa 425 is the only sophisticated boutique hotel in Southern California's Inland Empire. The hotel merges California mission architecture with contemporary styling and features 28 sophisticated guest rooms, an onsite lounge and full bar, a beautiful outdoor living room featuring water fountains and fire pits, meeting and event space and more.

Total Rooms - 28  
Double Rooms - 4  
Suites / Junior Suites - No  
Rates Range - \$235-\$495  
Breakfast - Yes  
Bus / RV Parking - No  
In-Room Coffee/Tea - Yes  
Preferred Group Size - 3-20  
Sales Contact Info -  
909-624-2272  
audrey@foursisters.com  
megan@foursisters.com



## DOUBLETREE BY HILTON HOTEL CLAREMONT

**555 W. Foothill Blvd.**

The hotel's elegant, contemporary guest rooms and suites offer comfort and convenience with luxurious Sweet Dreams® beds, in-room safes, refrigerators, and high-speed Internet access. Relax with friends, alumni or business associates in its lush courtyard, enjoy a cocktail or meal by the waterfall, and dine in casual elegance at **The Orchard Restaurant**, serving a wide selection of California Mediterranean Fusion influenced dishes. After hours, **Piano Piano's** high-energy, all-request show will keep guests singing and laughing into the night! And don't forget about those famous DoubleTree cookies.

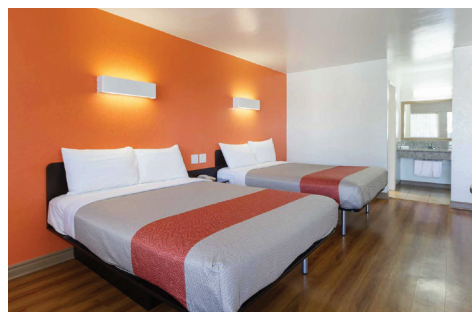
Total Rooms - 195  
Double Rooms - 90  
Suites / Junior Suites - 9  
Rates Range - \$179-\$409  
Breakfast - Available  
Bus / RV Parking - Yes  
In-Room Coffee/Tea - Yes  
Preferred Group Size - 10-300  
Sales Contact Info -  
Shirlene Nowling  
909-445-1924  
Shirlene.nowling@hilton.com



## UNIVERSITY INN CLAREMONT

**721 S. Indian Hill Blvd.**

Total Rooms - 61  
Double Rooms - 38  
Suites / Junior Suites - No  
Rates Range - \$69-\$170  
Breakfast - Yes  
Bus / RV Parking - Yes  
In-Room Coffee/Tea - Yes  
Preferred Group Size - 10-12 rooms



## MOTEL 6 CLAREMONT

**840 S. Indian Hill Blvd.**

Motel 6 Claremont features one of Southern California's finest tennis facilities available year-round with eight lighted championship courts. Guest amenities include free Wi-Fi, free local shuttle, and free use of its tennis courts. Park-like grounds available to rent for special events.

Total Rooms - 121  
Double Rooms - 92  
Suites / Junior Suites - No  
Rates Range - \$69-\$199  
Breakfast - No  
Bus / RV Parking - Yes  
In-Room Coffee/Tea - No  
Preferred Group Size - Any  
Sales Contact Info -  
Steven Mercado  
909-621-4831 x-103  
m68600bo@6franchise.com



## CLAREMONT LODGE

**736 S. Indian Hill Blvd.**

Enjoy unbeatable accommodations near the cultural and recreational center of Southern California with comfortable stylish rooms, including available jacuzzi suites. Amenities include an outdoor swimming pool and free Wi-Fi.

Total Rooms - 56  
Double Rooms - 11  
Suites / Junior Suites - Yes  
Rates Range - \$90-\$150  
Breakfast - No  
Bus / RV Parking - Yes  
In-Room Coffee/Tea - Yes  
Preferred Group Size - 10  
Sales Contact Info -  
909-626-5654

# DISCOVER CLAREMONT

## **DISCOVER CLAREMONT**

---

Due east from Hollywood, at the edge of Los Angeles County, lies a town that a studio executive might have ordered up as a real-life Main Street USA movie set.

It might look like an Eastern seaboard village with blocks of bustling, locally owned shops. Or maybe a small Midwestern, railway town with a train depot within walking distance of trendy restaurants and hearty pubs. Or even a Southern community with its tree-lined streets of well-kept craftsman homes providing the ideal setting for a leisurely bicycle ride.

Beyond the beaches, but not quite to the mountains or desert. Beyond the master-planned suburbs, but not quite to sprawling bedroom communities. Beyond the Kellogg Hill interchange, but not quite the Inland Empire. It's the kind of town that you fell in love with on a vacation to Maine – or was it Indiana? – but never thought you'd find again in Southern California.

It's Claremont.

### **The City of Trees**

The eastern-most city in Los Angeles County and the gateway to the Inland Empire, Claremont is 30 miles east of downtown Los Angeles along Interstate 10. It's a destination quite unlike any other in Southern California: A hidden gem within the sprawling, urbane of the L.A. basin.

Claremont is known locally as The City of Trees, a legacy born more than 100 years ago with the founding of Pomona College amidst acres of foothills adorned with citrus ranches. In fact, it was only in 1889 that the town's "shade tree committee" reported a gift of 250 trees, which were planted throughout the community shortly thereafter.

But the city is so much more than its seven nationally renowned colleges and 23,000 city-owned trees: It's a true getaway from the everyday bustle of commuter Los Angeles, and a gateway to the mountains and deserts.

### **Claremont Village**

It begins with a walkable, tree-lined downtown. Claremont Village is adorned with more than 150 locally owned boutiques and galleries, restaurants, eateries and pubs with entertainment and music. The Claremont Depot, a California historical landmark, greets visitors at the south end of downtown, servicing the Amtrak and Metrolink trains that stop there daily.

Leaving the depot, pleasant strolls along Yale and Harvard Avenues and Claremont Village's numbered streets await visitors, calling to mind a classic New England cape town or a mid-American

downtown. The architectural features of Claremont's downtown buildings reflect a city that came to rise in the early 1900s, with its classic bank and shop facades, and then grew with the rise of the automobile as seen in some of its more modern storefronts.

Across Indian Hill Blvd. are two unique shopping and arts centers – the modern Village Square Public Plaza, built in 2007, and the sharply retrofitted College Heights Lemon Packing House, a tribute to the city's citrus roots that reopened in 2007.

The Public Plaza is surrounded by shops, restaurants and the boutique Hotel Casa 425, and is home to the Laemmle's 5 Claremont Theatre. A modern public art fountain meanders through the square, providing both soothing water sounds as well as space for outdoor picnicking and music.

The Packing House is one of four working packing houses that lined the railroad tracks during the city's citrus heydays. In fact, Claremont citrus growers were among the first to organize a cooperative method for marketing their fruit, a coop which later became known as "Sunkist." Art galleries, a coffee and ice cream shop, a wine bar and other dining choices now call the Packing House home.

### **Historic Route 66**

While much of Claremont was built close to the train depot, Historic Route 66 runs along Foothill Blvd., 12 blocks to the north. The businesses and restaurants along this district include the DoubleTree by Hilton Hotel Claremont and the popular Candlelight Pavilion dinner theater that is housed within the gymnasium of the Old School House, Claremont's original 1911 school building that now is home to additional, unique retail shops and eateries.

Just up College Ave. from Route 66 is California Botanic Garden, the largest botanic garden dedicated exclusively to California's native plants. Encompassing 86 acres, the Garden displays about 2,000 taxa of California plants and includes those native to the California Floristic Province as a whole – from southern Oregon to Baja California. In addition to featuring a world-class botanical library and graduate-level education program, the Garden offers horticulture and community education programs to the public to encourage the use of California native plants in home landscapes.

### **The Colleges**

The Claremont Colleges is a consortium of five undergraduate liberal arts colleges and two graduate institutions reminiscent of the Oxford-Cambridge model. The undergraduate colleges include Claremont McKenna College, Harvey Mudd College, Pitzer College, Pomona College and Scripps College. The two graduate institutions include the Claremont Graduate University and the Keck Graduate Institute. Each has its own campus, students, faculty and own distinctive mission. The seven independent institutions on adjoining campuses offer rigorous curricula, small classes, distinguished professors, and personalized instruction in a vibrant residential college community that provides intensive interaction between students and faculty. With 6,900 students and 3,600 faculty and staff, located on more than 560 acres of land, the consortium generates an endless variety of intellectual, cultural, and social activities.

## Arts & Culture

Theater, orchestral and dance performances at Garrison Theater and Bridges Auditorium on campus provide a local window to the arts. Claremont museums include Benton Museum of Art at Pomona College (opening in 2020); Raymond M. Alf Museum of Paleontology, on the campus of the Webb Schools; Folk Music Center, owned by musician Ben Harper's family; and other galleries on the campuses and around town. Walks about the Village and college campuses will reveal dozens of pieces of world-class public art.

## A Way of Life

To visit Claremont is to be welcomed into a town that embodies the phrase "community spirit." Its annual Village Venture Arts & Crafts Faire each October welcomes more than 20,000 visitors to Claremont Village. Community-oriented events such as Friday Nights Live! (summer), the Claremont Farmers and Artisans Market (Sundays), and Claremont Art Walks reflect a true slice of Americana in Southern California.

At just 14 square miles Claremont is easily navigated on bicycle, and the city takes great pride in being a leader in providing bicycle-friendly initiatives for visitors. The League of American Bicyclists has acclaimed Claremont as a Silver-Level Bicycle Friendly Community. The Claremont Wilderness Park has an additional 10 miles of mountain bike trails and five miles of shared use pathways. It's no wonder Claremont was selected as a host city for the AMGEN Tour of California.

And indeed, Claremont is still a city of trees: It has been a winner of the National Arbor Day Association's Tree City USA award for more than 20 years running.

## A Surprising Retreat

With its lush, Eastern Seaboard setting, Claremont is an ideal destination for intimate, relaxing getaways. Couples will discover an idyllic, romantic setting as they stroll tree-lined streets adorned with charming shops, outdoor cafés and historic neighborhoods. And Claremont's thriving community of spas, salons, yoga and pilates centers are ready to provide visitors with an array of personalized services and treatments to make their getaways complete.

Now you get the idea why many chose Claremont to live, to learn, to enjoy nature...and to relax.

###

From 2013 / Updated June 2020

**Media Contact:**

Ron Antonette | 562-596-4466

[news@discoverclaremont.com](mailto:news@discoverclaremont.com)

# DISCOVER CLAREMONT

## **VISITOR ATTRACTIONS**

---

### **Claremont Hills Wilderness Park**

Located at the base of the San Gabriel Mountains and Angeles National Forest, the Claremont Hills Wilderness Park offers nature lovers a five-mile walking loop, along with smaller trails. The loop is one of the most popular in the Inland Empire, offering moderate elevation and dramatic views stretching to Downtown L.A., Catalina Island, and the Inland Empire basin. The 2.8-mile Thompson Creek Trail that abuts the park's southern point is also popular with walkers, runners, bicyclists and leashed dogs.

### **Claremont Museum of Art**

Located in the historic Claremont Depot, the Claremont Museum of Art celebrates the community's rich artistic legacy and promotes the cultural vitality of the region by showcasing paintings, sculptures, and other works by local artists.

### **Claremont Packing House**

Built in 1922, the Claremont Packing House is the last-standing of four Claremont packing houses built along the Santa Fe rail corridor during the height of the citrus industry. Today a century of architecture comes alive with fine dining, live music, hip boutiques, wine tastings, art classes, art walks and festivals. In addition to Packing House Wines, Gus's BBQ, and other great eateries, it features the Aerial Circus Studio, where students learn to fly through the air, a cooking academy, and Thoreau's Bookshop, a nationally famous bookstore that provides donated books to prisoners.

### **Claremont Village**

Claremont Village is a historic downtown area in the heart of Claremont. This European-style village has over 150 shops, restaurants, bakeries, art galleries, day spas, boutiques, entertainment venues, hotels, lounges, and more. Notable stops include shopping at Rhino Records, Rio de Ojas and Amelie; snacking at Cheese Cave, I Like Pie, Some Crust Bakery and Bert and Rocky's; and dining at Bardot, Espiau's, Tutti Mangia, Viva Madrid and Walter's. Walking these picturesque streets will make you swear you're no longer in Southern California.

### **Folk Music Center and Museum**

The Folk Music Center and Museum has been in Grammy-winner Ben Harper's family since 1958, and features hundreds of instruments from around the world that visitors can actually touch and play. It's become a destination for music lovers from as far away as Australia, Japan, and Europe. Many days you can meet Ellen Harper herself, working behind the counter.

### **Historic Route 66**

Along Foothill Blvd. find original buildings from "the mother road's" heyday, including Wolfe's Market (now shared with The Meat Cellar), the Old School House (home to Candlelight Pavilion), the former Griswold's Stone Cellar and Inn (now Buca di Beppo and DoubleTree Hotel by Hilton Claremont), and the former Tugboat Annie's boat-shaped restaurant.



### **California Botanic Garden**

California Botanic Garden is the largest botanic garden dedicated exclusively to California native plants, displaying about 2,000 taxa spread across 86 acres, including plants native to the California Floristic Province as a whole – from southern Oregon to Baja California. In addition to being able to stroll the garden’s pretty pathways, visitors can walk among butterflies at the Butterfly Pavilion, May through August (most summers), and enjoy music and brews on select summer evenings.

### **Raymond Alf Museum of Paleontology**

Dinosaur lovers can discover artifacts of the ancient giants at the Raymond M. Alf Museum of Paleontology, the only nationally accredited museum located on a high school campus in the United States. The museum has two circular exhibit areas totaling 4,000 square feet: the Hall of Footprints and the Hall of Life. The fossil track and trackway collection is one of the largest of its kind in the nation.

### **The Claremont Colleges**

The Claremont Colleges are a consortium of seven, highly selective institutions of higher education, all within walking distance of each other. Claremont McKenna, Harvey Mudd, Pomona, Pitzer and Scripps Colleges are among the nation’s top-ranked liberal arts schools. The campuses boast beautiful historical architecture, lavish lawns and numerous examples of public art. Check the colleges’ calendars for stimulating presentations, musical productions, art exhibits and other events.

### **James Turrell Skyspace (“Dividing the Light”)**

Called “one of the best works of public art in recent memory” by the *Los Angeles Times*, "Dividing the Light" gathers visitors on benches beneath a canopy that frames a window to the sky. At dusk and dawn a lighting program bathes the canopy in changing colors, from goldenrod to turquoise, altering the viewer’s perception of the sky. A shallow pool centered beneath the opening to the sky mirrors the daytime sky and reflects a dark echo of the night sky. Visit at 10 minutes before sunset and one hour before sunrise for the complete light show.

### **Margaret Fowler Garden**

Featured in *Westways*, this “secret garden” was originally designed as a European medieval-style cloister garden and is a favorite destination on the Scripps campus. There are olive and orange trees and interior arcades, one of which is covered by an enormous wisteria vine. On one wall, you’ll find a fresco painted in 1946 by Mexican muralist Alfredo Ramos Martinez.

### **The Benton Museum of Art at Pomona College**

The new Benton Museum of Art at Pomona College (“The Benton”) will provide a space for some of Southern California’s most compelling and experimental exhibitions. For decades, Pomona College has played a key part in shaping innovative artists, including Helen Pashgian, James Turrell, Peter Shelton, the late Marcia Hafif and the late Chris Burden. The Benton’s collection will include pieces from these alumni, and future exhibitions will place emphasis on cutting-edge art in the Los Angeles region.

# # #

May 2021

**Media Contact:**

Ron Antonette | 562-596-4466

[news@discoverclaremont.com](mailto:news@discoverclaremont.com)

DISCOVER

---

# CLAREMONT

## ***20 CAN'T-MISS REASONS TO VISIT CLAREMONT***

---

Located on the border of Los Angeles County and the Inland Empire, just a short drive from Ontario International Airport, Claremont is a haven offering intimate, relaxing days and nights. A quintessential college town in Southern California teeming with tree-lined streets and stunning historical architecture, Claremont is a hidden gem in greater Los Angeles – a place you'll be glad you discovered. Home to 15 museums, galleries and gardens, eight theaters, and amazing public art, it's a town unlike any other in greater L.A.

Visitors will find Claremont an ideal destination for romantic weekend getaways and mini family vacations alike. Discover inviting guest rooms, more than 70 restaurants, eateries and pubs, dozens of locally owned boutiques, relaxing day spas, bicycle-friendly streets and trails, public art and vivid architecture at its seven nationally renowned colleges, and the largest botanic garden dedicated exclusively to California's native plants.

Here are some can't-miss reasons to find out why Claremont is the "best-kept secret in L.A.":

- 1. Claremont Village.** The Claremont Village is a picturesque, European-style village spanning 16 city blocks with more than 150 unique restaurants, shops, bakeries, day spas, art galleries, entertainment venues, hotels, lounges and more. Walking these charming streets will make you feel like you're far, far away from the hustle and bustle of L.A. city life.
- 2. Local dining.** L.A. Weekly and NBC Los Angeles have declared Claremont a "food neighborhood" that's "worth the drive" for foodies and tourists. There are more than 70 eateries to sample in Claremont, most with local owners, and some with regionally renowned chefs, including Alain Fournier (Bardot) and Jose Ruiz (Tutti Mangia). With a wide range of cuisines, this is a weekend trip any self-respecting foodie will want to make several times a year.
- 3. Claremont Packing House.** Originally built in 1922, the Packing House was renovated to include boutique shops, galleries, dining, and nightclubs. In addition to Packing House Wines, Gus's BBQ, Iron & Kin Coffee Co. and other great eateries, it also features Aerial Circus Studio, where students learn to fly through the air, a cooking academy, and Thoreau's Bookshop, a nationally famous bookstore that provides donated books to prisoners.
- 4. A boutique paradise.** Claremont is home to dozens of locally owned boutiques featuring hand-selected merchandise, chic fashions, kitschy collectibles, antiques, gifts from unique corners of the world, and Fair Trade-sourced materials. Among dozens of unique boutiques, find shops such as Vintage Odyssey, with its vibrant vintage clothing, and The Hens' Kitchen Shoppe offering whimsical home gifts – two of many shops that give Claremont its unique vibe. The Packing House and Old School House also feature additional galleries and artisan shops.
- 5. California Botanic Garden.** The largest botanic garden dedicated exclusively to California's native plants, the Garden displays about 2,000 taxa of California plants spread across 86 acres, including plants native to the California Floristic Province as a whole – from southern Oregon to Baja California. In addition to featuring a world-class botanical library and graduate-level education program, the

Garden offers horticulture and community education programs to the public to encourage the use of California native plants in home landscapes.

**6. Local baked goods and sweets.** From sweets at **Some Crust Bakery** and Manhattan-style breads at **42<sup>nd</sup> Street Bagels** to freshly baked tarts and cakes (among other delicious goodies) at **Crème Bakery**, Claremont Village is a dream to those with a sweet tooth. Local chocolatier **A. Kline's** candy shop is filled with hand-dipped treats, and creamery **Bert and Rocky's** features more than 31 unique, homemade ice cream and sherbet flavors.

**7. Wine and cheese.** The *Wine Spectator* award-winning **Packing House Wines** wine bar and shop is located on the western end of the Packing House, offering a world of wines by the glass, varietals from growing regions all over the globe, and small plates and dinners from its executive chef. **The Cheese Cave**, a busy, artisan cheese shop on Yale Ave., offers dozens of cheeses from around the world, their own hand-pressed olive oils, and a selection of unique foods.

**8. Bike-friendly streets.** Honored as Silver Level Bicycle Friendly Community by the League of American Bicyclists, Claremont's streets are ideal for bicycling. For families, tree-lined streets offer majestic views of historic homes and the town's college campuses. Avid cyclists can tackle the AMGEN Tour of California's challenging route to Mt. Baldy, or trail bike in Claremont Hills Wilderness Park for views stretching to Downtown L.A., Catalina Island, and the Inland Empire basin. Travelers looking to make it a completely car-less adventure can bring bicycles on Metrolink, which takes visitors directly from Union Station to Claremont's historic depot.

**9. Pubs, grub, and nightlife.** Befitting a college town, Claremont features unique pubs that feature exceptional food, craft beer, live music and televised sports. The **Lounge at Casa 425** features small plates and a signature margarita. **Claremont Craft Ales'** signature Jacaranda IPA can be found on tap at many local restaurants. And from **The Back Abbey's** "Best in L.A." pub burgers and dark ales, to **Walter's** "secret bar," Claremont has an after-dark scene that's all its own.

**10. Dinosaurs!** Discover dinosaur artifacts at the [Raymond M. Alf Museum of Paleontology](#), the only nationally accredited museum of paleontology on a secondary school campus in the United States. Located on the campus of the Webb Schools, the museum has two circular exhibit areas totaling 4,000 square feet: the Hall of Footprints and the Hall of Life. The museum's fossil track and trackway collection is among the nation's largest of its kind.

**11. A secret garden.** On the Scripps College campus, find the gorgeous [Margaret Fowler Garden](#) (featured in *Westways*), originally designed as a European medieval-style cloister garden. This small, walled garden contains olive and orange trees and interior arcades, one of which is covered by an enormous wisteria vine. On one wall find a fresco painted in 1946 by Mexican muralist Alfredo Ramos Martinez.

**12. Pervasive public art.** Art lovers will want to be sure to stop at the **Pomona College Museum of Art** and the **Claremont Museum of Art** (at the Claremont Depot). Visitors will also find public galleries and discover dozens of pieces of world-class public art at the colleges and around town. [The James Turrell Skyspace, "Dividing the Light," at Pomona College](#), Margaret Fowler Garden at Scripps College, and a Venus statue by Flemish sculptor Giovanni da Bologna (1529-1608) at Harvey Mudd College are three must-visit campus stops. Find artist Chris Burden's "Meet Me in the Middle" sculpture of streetlights and benches in front of Roberts Pavilion.

13. **FUN festivals.** Summertime visitors can picnic at the annual [Midsummer Shakespeare Festival](#) at the outdoor Sontag Greek Theatre each July. Village Venture, the Inland Empire's largest outdoor arts and crafts faire, takes over Claremont's downtown streets in late October. Other annual celebrations include the [Claremont Village Craft Beer Walk](#) in June, [Claremont Village Wine Walk](#) in September, [Claremont Pie Festival](#) in March, and [Claremont Film Festival](#) in May.

14. **Cool music finds.** The **Folk Music Center** has been in Grammy-winner Ben Harper's family since 1958 and features hundreds of instruments from around the world that visitors can actually play. While perusing instruments, fans can ask Ellen Harper, who has been running the center for over 30 years, about touring with Ben to promote their mother-son 2014 collaboration album, "Childhood Home." Claremont is also home to a world-class record store: [Rhino Records](#), which opened in 1974, has become a destination for music lovers searching for rare or out-of-print vinyl. The shop also sells a wide assortment of record players.

15. **Yoga and ... spirits?** Yoga on Tap is held at [Claremont Craft Ales](#) — a modern brewpub off Route 66 pouring a variety of housemade ales, IPAs, and stouts — every 2nd and 4th Sunday of the month. **Hotel and Lounge Casa 425's** monthly Vino y Vinyasa sessions are a popular afternoon stretch and sip opportunity.

16. **Entertainment on Historic Route 66.** The Foothill Blvd. corridor includes the **DoubleTree by Hilton Hotel Claremont** and the **Candlelight Pavilion** dinner theater, which is housed within the gymnasium of the Old School House, Claremont's original 1911 school building. DoubleTree's popular dueling piano bar, **Piano Piano**, comes alive nightly with acts straight from the Las Vegas Strip.

17. **Seven world-class colleges.** A consortium of five undergraduate and two graduate schools of higher education are all within walking distance. In addition to being internationally recognized for producing leaders in business, government and the arts, the campuses boast beautiful historical architecture and lavish lawns perfect for picnicking. Check the various colleges' calendars for presentations, musical productions, art exhibits and other events.

18. **Public Plaza Village Square.** Part of the Claremont Village, the Village Square includes shops, restaurants, and the boutique hotel and lounge **Hotel Casa 425**. It's also home to the Laemmle 5 Claremont Theatre, which hosts a curated, short film festival every May. A modern public art fountain meanders through the square, providing both soothing water sounds as well as space for outdoor picnicking and music. During the summer, live bands perform in the square every Friday night.

19. **The great outdoors.** The **Claremont Hills Wilderness Park**, located at the base of the San Gabriel Mountains, offers a five-mile walking loop, along with smaller trails. Hikers will find views stretching to Downtown L.A., Catalina Island, and the Inland Empire basin. And Mt. Baldy Rd. leaves the city and takes motorists on a journey into the canyons, ending at the **Mt. Baldy Ski Lifts** (about 30 minutes away), a picturesque way to ascend to the highest peak in L.A. County.

20. **Free parking.** Indeed, there is one place in Los Angeles County where you can keep your quarters and credit cards in your pocket: Claremont offers free parking throughout the city.

# # #

May 2021  
**Media Contact:**  
Ron Antonette | 562-596-4466  
[news@discoverclaremont.com](mailto:news@discoverclaremont.com)